

FURNISH FORWARD

Freeman sets the stage for success with temporary furnishings that make lasting impressions. With high-quality furniture in shapes and styles that suit your budget and design needs, Freeman always provides an ideal solution for your exhibit.

- Sleek and professional furniture products transform your exhibit into a destination
- Extensive selection of seating, surfaces, and display fixtures provides a completely custom and comprehensive approach to your brand experience
- No assembly required: Hassle-free shipment, setup, and tear down allow your exhibitors to focus on what matters: new business
- Prices are all-inclusive and cover delivery, installation and material handling with no hidden fees



SUPERIOR SEATING

Sit back and relax – your search for comfortable seating is over. Choose from a sleek selection of sofas, loveseats and chairs that are sure to take your exhibit design to the next level.

ITEMS PICTURED BELOW

Swanson Chair | 810875 | **Page 10**

Silverado Cocktail Table | 82014 | **Page 17**

Powered Locking Pedestal, 42" | 85063 | **Page 23**



SEATING

Naples



CHAIR *SELECT*
black leather **810119**

36"L 30"D 28"H

⊕ Powered options available



LOVESEAT *SELECT*
black leather **830120**

62"L 30"D 28"H

⊕ Powered options available



SOFA *SELECT*
black leather **830119**

87"L 30"D 28"H

⊕ Powered options available

Heathrow



ARMLESS CHAIR *SELECT*
black leather **810116**

24"L 24"D 28"H



CORNER CHAIR *SELECT*
black leather **810117**

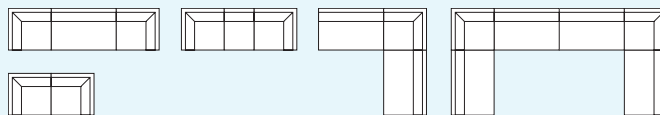
24"L 24"D 28"H



SOFA *SELECT*
black leather **830116**

48"L 24"D 28"H

possible configurations



⊕ See pages 22 and 23 for all Powered options.

SEATING

South Beach



SOFA *SELECT*
platinum suede **8301**

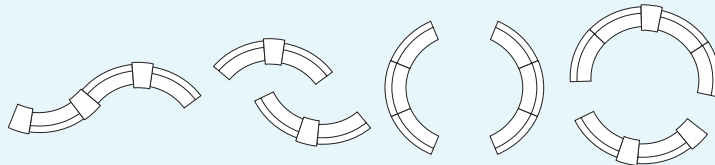
69"L 29"D 33"H



OTTOMAN *SELECT*
platinum suede **8151**

25"L 31"D 18"H

possible configurations



Key Largo



LOVESEAT *SELECT*
black fabric **830950**

57"L 35"D 34"H



SOFA *SELECT*
black fabric **830951**

79"L 35"D 34"H



CHAIR *SELECT*
black fabric **810950**

35"L 35"D 34"H

SEATING

Allegro

CHAIR **SELECT**
blue fabric 81019

36"L 34.5"D 30"H

SOFA **SELECT**
blue fabric 83015

73"L 34.5"D 29.5"H



Fairfax

CHAIR **SELECT**
white vinyl/brushed metal 810949

27"L 26"D 30"H

SOFA **SELECT**
white vinyl/brushed metal 830949

62"L 26"D 30"H



Tangiers

CHAIR **SELECT**
beige fabric 810118

34"L 37"D 36"H

SOFA **SELECT**
beige fabric 830118

78"L 37"D 36"H



Roma

CHAIR **SELECT**
white vinyl 81020

37"L 31"D 33"H

⚡ Powered options available

SOFA **SELECT**
white vinyl 83016

78"L 31"D 33"H

⚡ Powered options available



⚡ See pages 22 and 23 for all Powered options.

CASUAL SEATING

Look no further for a great variety of **informal, modern seating options**. Here you will find chairs, sofas, stools, ottomans – even sophisticated bar sets – that turn exhibits into destinations.

OTTOMANS

ENDLESS SQUARE **SELECT**

white leather **815122**
black leather **815123**

34"L 34"D 15"H

ENDLESS CURVED OTTOMAN **SELECT**

white leather **815953**
black leather **815952**

60.5"L 37.5"D 15"H



OTTOMAN BENCH **SELECT**

white leather **815120**
black leather **815121**

60"L 20"D 18"H



ITEMS PICTURED BELOW

Roma Sofa Powered | 83017 | **Page 5, 22**

Regis Bench/Table | 82074 | **Page 18**

Swanson Chair | 810875 | **Page 10**

Work Desk | 820706 | **Page 21**

Regis End Table | 82075 | **Page 18**

Ice Side Chair | 810814 | **Page 9**



OTTOMANS

VIBE CUBE **SELECT**

- blue vinyl **81518**
- red vinyl **81519**
- orange vinyl **81525**
- pink vinyl **81520**
- yellow vinyl **81517**
- black vinyl **81530**
- white vinyl **81531**

18"L 18"D 18"H



EDGE LED
CUBE OTTOMAN* **SELECT**

high density plastic **81526**

20"L 20"D 20"H



*Electrical power must be ordered separately

BANQUETTES

CENTER CONE **SELECT**
8506

38"Round 51"H

Powered

Banquette Cone has 3 AC and 2 USB plugs built into the center cone.

QUARTER CURVED
OTTOMAN **SELECT**
8507

53"L 22"D 18"H



possible configurations

72"Round 18"H

72"Round 51"H

See pages 22 and 23 for all Powered options.

OCCASIONAL CHAIRS

**BLACK DIAMOND
SIDE CHAIR** **ESSENTIALS**
N71089

21"W | 23"L | 32"H

**BLACK DIAMOND
ARMCHAIR** **ESSENTIALS**
N71090

20"W | 21"L | 33"H

DIVA CHAIR **ESSENTIALS**
N71091

18"W | 16"L | 31"H



**LIMERICK® CHAIR
BY HERMAN MILLER** **ESSENTIALS**
gray C210108

18"W | 17.75"L | 33"H

MADRID CHAIR **SELECT**
black leather/chrome 8102
white leather/chrome 810816

30"L | 30"D | 31"H



ITEMS PICTURED BELOW

Powered Locking Pedestal, 36" | 85061 | **Page 23**

White Vibe Cube | 81531 | **Page 7**



OCCASIONAL CHAIRS

MEETING CHAIR *SELECT*
 white vinyl **810948**
 espresso bonded leather **810835**
 taupe microfiber **810836**

25.5"L 23.5"D 34"H



TUB CHAIR *SELECT*
 black fabric **8103**

31"L 31"D 31"H

MADDEN CHAIR *SELECT*
 light gray vinyl **810843**

27"L 32"D 33"H



ICE SIDE CHAIR *SELECT*
 transparent **810814**

17.25"L 20"D 32"H

FUSION CHAIR (WHITE/BLACK) *SELECT*
 white/black high density plastic **810838**

19"L 21"D 32"H



OCCASIONAL CHAIRS

CHRISTOPHER CHAIR **SELECT**
white vinyl/chrome **810846**

17"L 19"D 35"H

RUSTIQUE CHAIR WITH ARMS **SELECT**
gunmetal **810841**

20"L 18"D 31"H



RAZOR ARMLESS CHAIR **SELECT**
white high density plastic **810837**

15.38"L 15.5"D 30.5"H

NEW YORK CHAIR **SELECT**
onyx/maple wood/chrome **81090**

23"L 32"D 33"H

SWANSON CHAIR **SELECT**
white vinyl **810875**

28"L 25"D 18"H



BERLIN STACK CHAIR **SELECT**
white & red plastic/chrome **810811**
white & black plastic/chrome **810810**

18"L 22"D 32"H

WENDY CHAIR **SELECT**
clear acrylic **810847**

15"L 19.7"D 35.8"H



CONFERENCE CHAIRS

GRAY GASLIFT CHAIR **ESSENTIALS**

with arms **N71046**
without arms **N71045**

26"W 20"L 38"H Adjustable

LABREA CHAIR **SELECT**

charcoal gray fabric **810874**

35"L 27"D 40"H

ALTURA CONFERENCE/ GUEST CHAIR **SELECT**

black fabric/black steel **81063**

25"L 20"D 34"H



LUXOR EXECUTIVE CHAIR **SELECT**

black leather **810807**

27"L 28"D 47"H Adjustable

PRO EXECUTIVE HIGH BACK CHAIR **SELECT**

white vinyl **810844**

black vinyl **810946**

25"L 24"D 48"H Adjustable



PRO EXECUTIVE MID BACK CHAIR **SELECT**

white vinyl **810945**

black vinyl **810944**

24"L 22"D 40"H Adjustable

PRO EXECUTIVE GUEST CHAIR **SELECT**

black vinyl **810947**

24"L 22"D 36"H



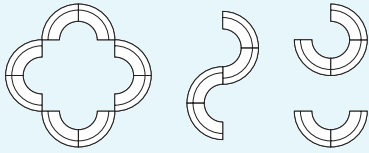
FREEMAN

BARS & BARSTOOLS

MARTINI BAR **SELECT**
 gray metal rounded bar with frosted glass top and chrome legs **8501**

67"L | 50"D | 47"H | Radius 76.5"

possible configurations



BLACK DIAMOND STOOL **ESSENTIALS**
N71088

22"W | 18"L | 46"H

GRAY GASLIFT STOOL **ESSENTIALS**
 with arms **N71048**
 without arms **N71047**

24"W | 20"L | 46"H | Adjustable

DIVA COUNTER STOOL **ESSENTIALS**
N71092

17"W | 16"L | 36"H

The Intermediate 25" seating height



LIMERICK® STOOL
BY HERMAN MILLER **ESSENTIALS**
 gray **C210109**

18"W | 17.75"L | 44"H

LIFT HYDRAULIC BARSTOOL **SELECT**
 gray vinyl/chrome **810872**
 red vinyl/chrome **810873**
 black vinyl/chrome **810871**
 white vinyl/chrome **810870**

15" Round | 23-33.5"H | Adjustable



APEX BARSTOOL **SELECT**
 black vinyl **33010**
 blue ultra suede **33019**
 red vinyl **33042**
 white vinyl **33043**

21"L | 21"D | 33"H



BARS & BARSTOOLS

BANANA BARSTOOL **SELECT**

white vinyl/chrome **810103**
black vinyl/chrome **810104**

21"L 22"D 30"H

JETSON BARSTOOL **SELECT**

black vinyl/black steel **810706**

18"L 19"D 29"H

ZOEY BARSTOOL **SELECT**

white vinyl/chrome **810840**
black vinyl/chrome **810834**

15"L 17"D 31-35"H



CHRISTOPHER BARSTOOL **SELECT**

white **810848**

19"L 15"D 41"H

ICE BARSTOOL **SELECT**

transparent/chrome legs **810815**

16.75"L 16"D 37.75"H

SHARK SWIVEL BARSTOOL **SELECT**

white plastic/chrome **810202**

22"L 19"D 34-44"H Adjustable



RUSTIQUE BARSTOOL **SELECT**

gunmetal **810839**

13"L 13"D 30"H

GIN BARSTOOL **SELECT**

maple wood/chrome **810505**

16"L 16"D 29"H

OSLO BARSTOOL **SELECT**

blue plastic/chrome **810200**
white plastic/chrome **810201**

17"L 20"D 30"H



TURN THE TABLES IN YOUR FAVOR

Bring professionalism to the table with our sleek variety of surfaces and tabletops. Choose from modern glass tops and more.

ITEMS PICTURED BELOW

Endless Square Ottoman | 815122 | **Page 6**

Geo End Table | 82035 | **Page 17**

30" Round Hydraulic Base Bar Table | 820230 | **Page 16**

Ice Barstool | 810815 | **Page 13**



DRAPED OR UNDRAPED TABLES & COUNTERS



ESSENTIALS

TABLES (30" HEIGHT)	3'	4'	6'	8'
Draped	C130330	C130430	C130630	C130830
Draped on Fourth Side			C12404630	C12404830
Undraped	C131330	C131430	C131630	C131830

COUNTERS (42" HEIGHT)	3'	4'	6'	8'
Draped	C130342	C130442	C130642	C130842
Draped on Fourth Side			C12404642	C12404842
Undraped	C131342	C131442	C131642	C131842

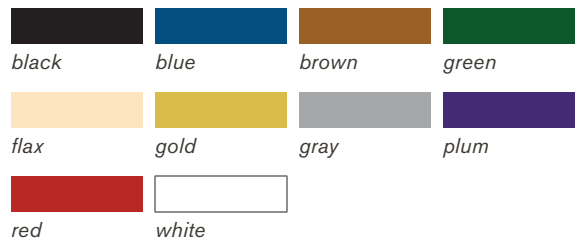


Table-top risers are also available in a variety of sizes. See order form for details.



PEDESTAL TABLES

Soho Series



**BLACK-TOP
MINI BISTRO** **ESSENTIALS**
N72066

18" Round 18"H

**BLACK-TOP
CAFÉ BISTRO** **ESSENTIALS**
N72069

24" Round 30"H

N72067

36" Round 30"H



**BLACK-TOP
BISTRO** **ESSENTIALS**
N72070

24" Round 42"H

N72068

36" Round 42"H

Chelsea Series



**BUTCHER BLOCK-TOP
CAFÉ BISTRO** **ESSENTIALS**
N72063

30" Round 30"H

N72064

36" Round 30"H



**BUTCHER BLOCK-TOP
BISTRO** **ESSENTIALS**
N720163

30" Round 42"H

N720164

36" Round 42"H

**STANDARD BASE
CAFÉ TABLE** **SELECT**
liquid white 820232
blue steel 8201203

30" Round 29"H

**STANDARD BASE
BAR TABLE** **SELECT**
liquid white 820231
blue steel 8201204

30" Round 42"H



**HYDRAULIC BASE
CAFÉ TABLE** **SELECT**
liquid white 820224

30" Round 29"H

**HYDRAULIC BASE
BAR TABLE** **SELECT**
liquid white 820230

30" Round 45"H



OCCASIONAL, END & COCKTAIL TABLES

Studio Series

BLACK END TABLE *ESSENTIALS*
C115104

17"W 17"L 18"H

BLACK COCKTAIL TABLE *ESSENTIALS*
C115103

36"W 20"L 15"H



Inspiration

END TABLE *SELECT*
tempered glass/painted steel 82023

24"L 28"D 22"H

TABLE *SELECT*
tempered glass/painted steel 82022

42"L 28"D 18"H



Geo

END TABLE *SELECT*
glass/black steel 82025
glass/chrome 82035

26"L 26"D 20"H

TABLE *SELECT*
glass/black steel 82024
glass/chrome 82034

50"L 22"D 16"H



Silverado

END TABLE *SELECT*
tempered glass/painted steel 82015

24" Round 22"H

TABLE *SELECT*
tempered glass/painted steel 82014

36" Round 17"H



FREEMAN

OCCASIONAL, END & COCKTAIL TABLES

Sydney

END TABLE **SELECT**

black laminate/brushed steel **82054**
white laminate/brushed steel **82055**

27"L 23"D 22"H

TABLE **SELECT**

black laminate/brushed steel **82052**
white laminate/brushed steel **82053**

48"L 26"D 18"H

⊕ Powered options available



Oliver

END TABLE **SELECT**

walnut finish **82088**

22" Round 22"H

TABLE **SELECT**

walnut finish **82087**

47"L 27"D 19"H



Regis

END TABLE **SELECT**

brushed metal **82075**

16"L 15.5"D 16.5"H

BENCH/TABLE **SELECT**

brushed metal **82074**

47"L 15.5"D 16"H



⊕ See pages 22 and 23 for all Powered options.

OCCASIONAL, END & COCKTAIL TABLES

GEO SQUARE-ROUND TABLE *SELECT*

glass/black steel **82043**
 glass/chrome **82044**

42"L 42"D 29"H



CANDY TABLE *SELECT*

white plastic/black laminated top **82056**

18"L 18"D 18"H



AURA ROUND TABLE *SELECT*

white metal **820844**

15"Round 22"H

EDGE LED CUBE TABLE* *SELECT*

white plastic/clear acrylic top **82057**

20"L 20"D 20"H

**Electrical power must be ordered separately*

TABLES

ITEMS PICTURED BELOW

Endless Curved Ottoman | 815953 | **Page 6**

Silverado Table | 82014 | **Page 17**

Zoey Barstools | 810840 | **Page 13**

30" Round Hydraulic Base Bar Table | 820230 | **Page 16**



FREEMAN

CONFERENCE TABLES

NOVA WHITE OVAL TABLE **SELECT**
white laminate/chrome **82060**

71"L 35.5"D 29"H

GEO CONFERENCE TABLE **SELECT**
glass/black steel **82041**
glass/chrome **82051**

60"L 36"D 29"H

MANHATTAN TABLE **SELECT**
glass/black steel **82033**

42" Round 29"H



COMMUNAL TABLE (MAPLE WITH GROMMETS) **SELECT**
laminate/metal
82058

72"L 26"D 30"H

82059

72"L 26"D 42"H



COMMUNAL TABLE (MAPLE) **SELECT**
laminate/metal
82067

72"L 26"D 30"H

82068

72"L 26"D 42"H



COMMUNAL TABLE (WHITE) **SELECT**
laminate/metal
82063

72"L 26"D 30"H

82066

72"L 26"D 42"H

8' RECTANGULAR CONFERENCE TABLE **SELECT**
granite **820115**

96"L 44"D 29"H

6' OVAL CONFERENCE TABLE **SELECT**
granite nebula **820203**

72"L 42"D 29"H

42" ROUND WHITE CONFERENCE TABLE **SELECT**
white laminate **820708**

42" Round



OFFICE

MADISON DESK **SELECT**
gray acajou **84075**

30"L 60"D 29"H

MADISON CREDENZA **SELECT**
gray acajou **84077**

20"L 60"D 29"H

MADISON BOOKCASE **SELECT**
gray acajou **84078**

12"L 36"D 72"H



COMPUTER DESK / TABLE

WORK DESK **SELECT**
white laminate **820706**

48"L 24"D 30"H

MERLIN TABLE **SELECT**
gray laminate **820707**

46"L 29"D 30"H



TABLES

ITEMS PICTURED BELOW

Key Largo Sofa | 830951 | **Page 4**

Black Diamond Stool | N71088 | **Page 12**

Key Largo Chair | 810950 | **Page 4**

Soho Black Top Bistro | 36" Round - N72068 | **Page 16**

Sydney Powered Table | 82052 | **Page 18, 23**

Aura Round Table | 820844 | **Page 19**



POWERED

All Powered options will have an **adapter included with rental**. Additional adapters can be ordered separately.

POWERED SEATING

NAPLES CHAIR, POWERED* **SELECT**

black vinyl **810120**

36"L | 30"D | 28"H



Power Panel Detail



NAPLES LOVESEAT, POWERED* **SELECT**

black vinyl **830122**

62"L | 30"D | 28"H



Power Panel Detail



NAPLES SOFA, POWERED* **SELECT**

black vinyl **830121**

87"L | 30"D | 28"H



Power Panel Detail

ROMA CHAIR, POWERED* **SELECT**

white vinyl **81021**

37"L | 31"D | 33"H



Power Panel Detail



ROMA SOFA, POWERED* **SELECT**

white vinyl **83017**

78"L | 31"D | 33"H



Power Panel Detail

**Electrical power must be ordered separately*

POWERED TABLES

G30 COCKTAIL TABLE, POWERED* **SELECT**
white top **82070**

72"L 26"D 18"H

G30 CAFÉ TABLE, POWERED* **SELECT**
white top **82071**

72"L 26"D 30"H

G30 BAR TABLE, POWERED* **SELECT**
white top **82072**

72"L 26"D 42"H



TECH DESK WITH 3 DRAWER FILE CABINET, POWERED* **SELECT**
black metal **84083**
desk only **84084**

60"L 30"D 30"H

SYDNEY COCKTAIL TABLE, POWERED* **SELECT**
black laminate/brushed steel **82076**
white laminate/brushed steel **82073**

48"L 26"D 18"H



POWERED PRODUCT PEDESTALS

POWERED* LOCKING PEDESTAL, 36" **SELECT**
black **85060**
white **85061**

24"L 24"D 36"H

POWERED* LOCKING PEDESTAL, 42" **SELECT**
black **85062**
white **85063**

24"L 24"D 42"H



Power Panel Detail

ADAPTERS

4-WAY CHARGING ADAPTER* **SELECT**
black **850800**
white **850801**

36"L

All Powered options will have one adapter included per power panel. Additional adapters can be ordered with the rental.



BANQUETTE

CENTER CONE **SELECT**
8506

38"Round 51"H

Powered

Banquette Cone has 3 AC and 2 USB plugs built into the center cone.



*Electrical power must be ordered separately

POWERED

STORAGE

3 DRAWER FILE CABINET ON CASTORS *SELECT*
84080

16"L 20"D 28"H

LOCKING DOOR PEDESTAL *SELECT*
black laminate 85078

24"L 24"D 42"H

⚡ Powered options available



STORAGE

FILE CABINET WITH LOCK *ESSENTIALS*
standard size

TWO-DRAWER
N74082

15"W 29"L 28"H

FOUR-DRAWER
N74081

15"W 29"L 50"H



PRODUCT DISPLAY

ETAGERE *SELECT*
black 850604
pewter 850605

30"L 16"D 70"H



REFRIGERATOR



SMALL REFRIGERATOR* *ESSENTIALS*
N75057

19"W 19"L 34"H



REFRIGERATOR* *SELECT*
white - 14.0 cubic feet 8503001

20"L 30"D 65"H

LIGHTING



MASON TABLE LAMP* *SELECT*
white/brushed silver 850707

16" Round 26"H



MASON FLOOR LAMP* *SELECT*
white/brushed silver 850708

18" Round 55"H

⚡ See pages 22 and 23 for all Powered options.

*Electrical power must be ordered separately

DISPLAY

Some of the most essential elements of your exhibit are the surfaces on which you display your show materials. That's why we have an appealing variety of displays, from standing cylinders to sleek computer desks to draped tables and counters, to ensure your show space will be both attractive and interactive.

DISPLAY CYLINDERS **ESSENTIALS**

black

low **N75020**

30"W 15"H

medium **N75021**

18"W 20"H

high **N75022**

24"W 36"H

Available in rectangular sizes.



DISPLAY CUBES **ESSENTIALS**

black

12" small **N75030**

12"W 12"L 42"H

18" medium **N75031**

18"W 18"L 36"H

24" large **N75032**

24"W 24"L 42"H



ORION COMPUTER KIOSK **ESSENTIALS**

black **N75079**

28"L 28"D 40.5"H

(Computer not included.)



DISPLAY COUNTER **ESSENTIALS**

black **N72056**

24"W 49"L 42"H

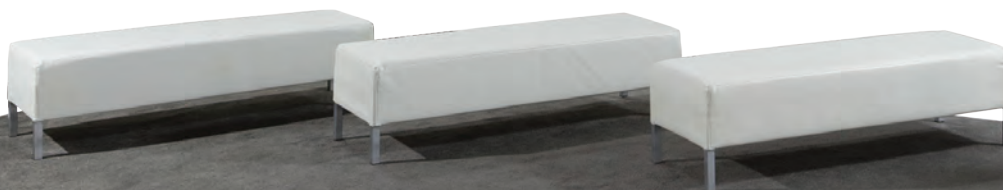


DISPLAY

ITEMS PICTURED BELOW

Ottoman Bench | 815120 | **Page 6**

Powered Locking Pedestal, 36" | 85061 | **Page 23**



ACCESSORIES

We know that every exhibit is different and requires certain pieces that may be hard to find. That's why we offer an assortment of accessories that will meet your needs, from literature racks to bulletin boards to refrigerators and file cabinets. No matter the requirement, your exhibit will always stand out with these striking and functional pieces.

TABLET STAND

MOBILE TABLET STAND **SELECT**

white **850714**

black **850715**

14"L 13"D 44.5"H

The Mobile Tablet Stand will adjust to fit any tablet with dimensions of at least 6.75"x 9.375" but not larger than 8.5"x 2.5", including Apple iPad, Samsung Galaxy Tab and Lenovo IdeaPad.



TABLET STAND ACCESSORIES

BROCHURE HOLDER* **SELECT**

black **850711**

8.625"L 1.1"D 11.325"H

WIRELESS PRINTER HOLDER* **SELECT**

black **850712**

3.3"L 1.9"D 5.28"H

CHARGING SHELF* **SELECT**

black **850713**

14.85"L 7.17"D 1"H



**To be ordered with the tablet stand*

ACCESSORIES

CHROME STANCHION WITH 8' RETRACTABLE BELT *ESSENTIALS*
C220121

42"H

CHROME SIGN HOLDER *ESSENTIALS*
C220118

Holds 22" x 28" sign

ROUND LITERATURE RACK *ESSENTIALS*
N750135

17"W | 17"L | 57"H

Revolving black display holds printed materials for easy access from 20 pockets.



FLAT LITERATURE RACK *ESSENTIALS*
N750136

10"W | 55"H

Forward-facing black display presents printed materials in six pockets.

CHROME COAT TREE *ESSENTIALS*
C220109

ALUMINIUM CHROME EASEL *ESSENTIALS*
C220134

CHROME BAG RACK *ESSENTIALS*
C220110

SPECIAL DRAPING (not pictured)

Special drape is available in a variety of colors. Refer to the order form for details.



ACCESSORIES



FLOOR-STANDING BULLETIN BOARD *ESSENTIALS*
C10201484

48"W | 96"L | 78"H



CORRUGATED WASTEBASKET *ESSENTIALS*
C220106

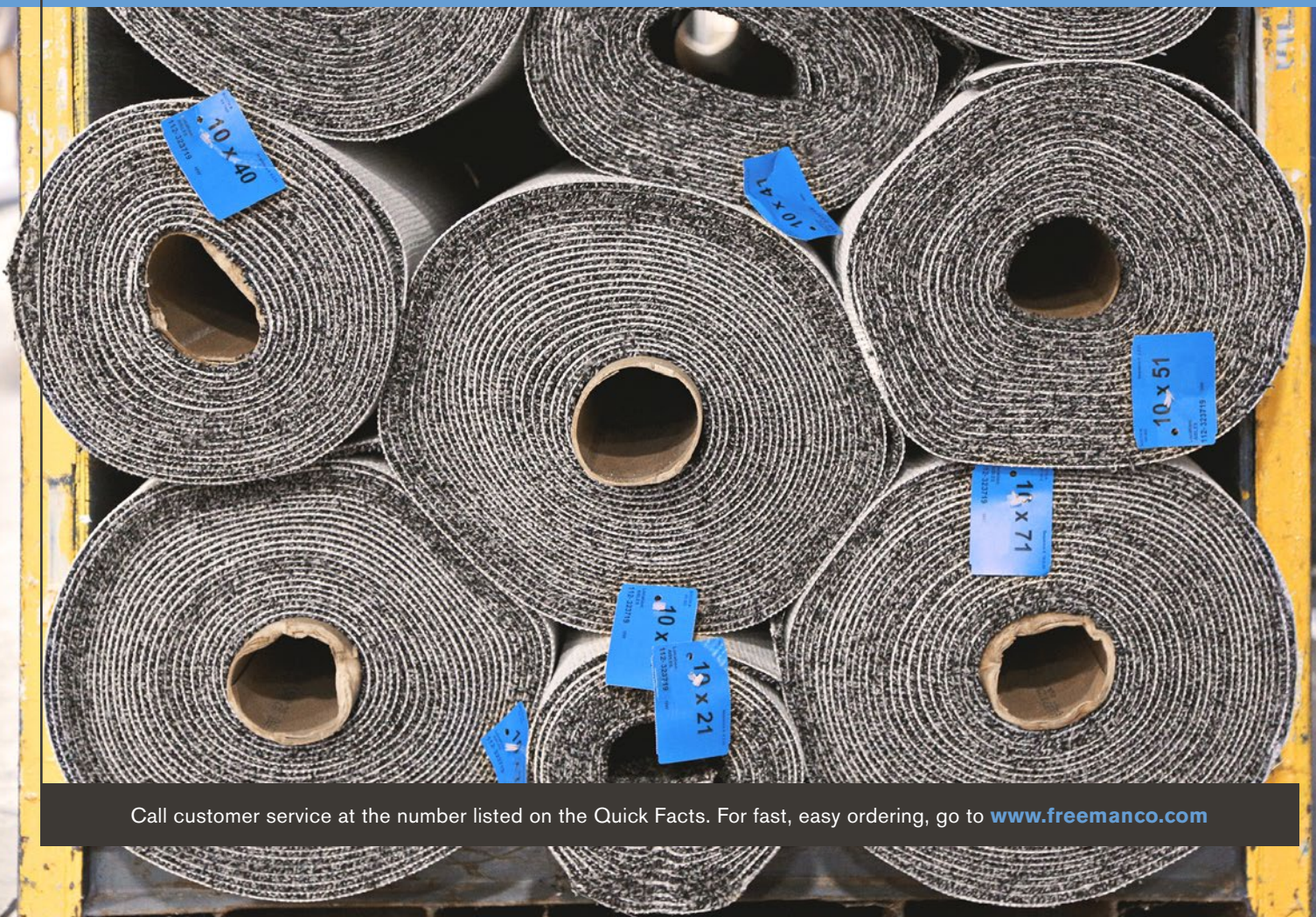


WASTEBASKET *ESSENTIALS*
wastebasket color may vary.
C220107

FROM THE GROUND UP

Engage your audience from the moment they set foot in your exhibit with Freeman's custom carpets. Our colorfast carpeting boasts a consistent shade every time and the padding exceeds industry standards, ensuring that you'll be floored by the quality. Freeman's custom options include borders, patterns and logo applications in both our classic and prestige carpeting lines.

- Colorfast carpet technology guarantees a uniform and professional look throughout the life of your exhibit
- Diverse customization options guarantee the fulfillment of your brand standards
- All carpet and padding is manufactured with recycled material
- Rental prices are all-inclusive so there are never hidden charges for material handling or pickup



Call customer service at the number listed on the Quick Facts. For fast, easy ordering, go to www.freemanco.com

PRESTIGE CARPET

Freeman's prestige carpet combines plush comfort with durable soil and stain resistance, perfect for high-traffic areas. Five popular colors are available in a luxurious 40-ounce weight and all nine designer colors are available in a 28-ounce weight.

Freeman's prestige carpet packages include new, 10-foot-wide carpet, delivery, Visqueen covering, installation, carpet tape, carpet removal and all carpet material handling fees. Price includes environmentally friendly disposal of carpet after usage. Foam carpet padding is available for a minimal fee. If you have a large order, please contact us to see if volume discounts may apply.

Custom Options

Prestige carpets can also be customized to fit your exhibit needs with unique logos, patterns and borders. Call the phone number on the Quick Facts for assistance.



*Colors available in both 28 oz. and 40 oz.

CLASSIC CARPET

Custom Cut

Freeman classic carpet is available in a range of colors and includes delivery, Visqueen covering, installation, carpet tape, carpet removal and all carpet material handling fees. Foam carpet padding is available for a minimal fee. If you have a large order, please contact us to see if volume discounts may apply.

Standard Cut

Our classic carpet comes in a variety of sizes. Prices include delivery, installation, carpet tape, carpet removal and all carpet material handling fees. Foam carpet padding and Visqueen covering are available for a minimal fee.



Actual colors may vary slightly

FIT TO PRINT

.....

SmartFabric™ is a triple layered fabric made of 100% polyester that's ideal for printed graphics. It's an extremely versatile all-in-one fabric and has been treated to meet NFPA 701 small-scale flammability standards.



Your Marketing Message Here

SMARTFABRIC™ RENTAL EXHIBITS



10 x 10 ft. unit

FRAME

117"W 93.5"H



10 x 20 ft. unit

FRAME

234"W 93.5"H

MAGNETIC SHELVES

clear acrylic

36"W 12"H .25"D

(up to 15lbs each)

RENTAL EXHIBITS INCLUDE:

- Custom Fabric Graphic (item purchased to keep)
- Carrying Case for Fabric Graphic (item purchased to keep)
- Rental Frame
- 9'x10' or 9'x20' Classic Carpet (select color below)
- Exhibit Installation & Dismantle
- Exhibit Material Handling
- Nightly Vacuuming
- 2-Arm Light/10', 4-Arm Light/20'
- 2 Clear Acrylic Shelves/10' (36"x12", up to 15 lbs.), 4 Clear Acrylic Shelves/20' (36"x12", up to 15 lbs.)
- Power (500 watts) for LIGHTS only (and Labor to hang lights)

9'x10' or 9'x20' Classic Carpet (16 oz.) – Color Options Included with Rental Package Options Above



black



blue



grey



green



latte



midnight blue



plum



red



red pepper



tuxedo

9' carpet is laid toward the front edge, leaving 1' at the back of the booth for utility port access.

CUSTOM GRAPHICS

A Freeman Exhibitor Sales Specialist will be contacting you to review the process for providing graphic files and to review helpful tips that will ensure a successful graphic print.

FRAME ONLY UNIT

This option is available for customers who have previously rented the SmartFabric™ Rental Exhibit and are reusing their graphics. Fabric from other sources will not be installed on this Freeman frame rental. If you need Freeman to create a new graphic, please select the SmartFabric™ Rental Exhibit. No fabric graphics will be provided separate from the rental unit.



10 x 10 ft. frame



10 x 20 ft. frame

RENTAL EXHIBITS INCLUDE:

- Rental Frame
- 9'x10' or 9'x20' Classic Carpet (select color below)
- Exhibit Installation & Dismantle
- Exhibit Material Handling
- Nightly Vacuuming
- 2-Arm Light/10', 4-Arm Light/20'
- 2 Clear Acrylic Shelves/10' (36"x12", up to 15 lbs.), 4 Clear Acrylic Shelves/20' (36"x12", up to 15 lbs.)
- Power (500 watts) for LIGHTS only (and Labor to hang lights)

Prestige Carpet (28 oz.) – Available Upgrade Color Options



black*



cardinal



charcoal*



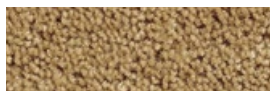
cream



grey pearl*



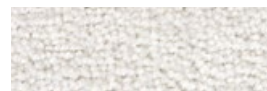
navy*



toast



wedgewood



white*

*Colors available in both 28 oz. and 40 oz.

RENTAL EXHIBITS THAT IMPRESS

When it comes to your exhibit, effective solutions don't require expensive investments. Take the stress out of your upcoming show with a rental exhibit from Freeman. With quality rental options that meet your budget requirements, we'll have your showroom ready at a moment's notice, without the hassle of ownership.

PACKAGE 1



10 X 20

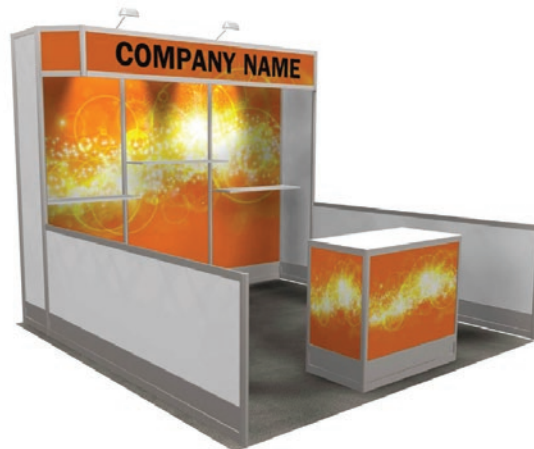


10 X 10

PACKAGE 1 UPGRADE OPTIONS

With Graphics and Cabinet

10 X 10



FREEMAN

PACKAGE 2



10 X 20



10 X 10

PACKAGE 3



10 X 20



10 X 10

PACKAGE 4



10 X 20



10 X 10

PACKAGE 2 UPGRADE OPTIONS

With Graphics and Cabinet

10 X 10



PACKAGE 3 UPGRADE OPTIONS

With Graphics and Cabinet

10 X 10



PACKAGE 4 UPGRADE OPTIONS

With Graphics and Cabinet

10 X 10



FREEMAN

PACKAGE 5



10 X 20



10 X 10

PACKAGE 6



10 X 20



10 X 10

PACKAGE 5 UPGRADE OPTIONS

With Graphics and Cabinet

10 X 10



PACKAGE 6 UPGRADE OPTIONS

With Graphics and Cabinet

10 X 10



FREEMAN

Other upgrade options available that allow you to change the panels to Slatwall or colored pvc panels, add shelves, change the metal color and add cabinets as a storage option with the dual purpose of a reception counter.



10 X 10

SLATWALL



10 X 10

COLORED PANELS



10 X 10

SHELVES



10 X 10

BLACK METAL



CABINETS

To view additional custom designs, go to www.freemanco.com/customexhibits

Fabric and Booth Panels – Color Options Included with Rental Package



black fabric



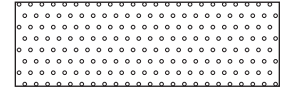
blue fabric



grey fabric



white pvc



white perlboard

Classic Carpet (28 oz.) – Color Options Included with Rental Package Options Above



black



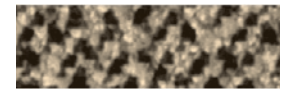
blue



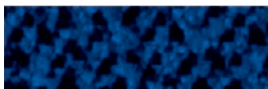
grey



green



latte



midnight blue



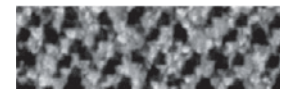
plum



red



red pepper



tuxedo

Actual colors may vary slightly.

Prestige Carpet (40 oz.) – Available Upgrade Color Options



black



cardinal



charcoal



cream



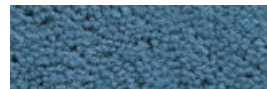
grey pearl



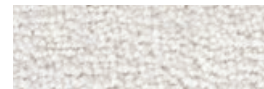
navy



toast



wedgewood



white

All exhibits include:

- Installation & dismantling of exhibit
- Material handling
- Classic carpeting with nightly vacuuming
- 2 arm lights per 10' (500 watts) and associated labor for setup
- Customization options for all packages

questions?

All packages can be customized or modified to fit your specific needs. To speak with an Exhibitor Sales Specialist, call the number listed on the Quick Facts. For additional custom examples, visit the link below.

F R E E M A N

FLEXING TO FIT YOUR NEEDS

TotalFlex® provides the ability to configure exhibits to fit your space, budget and vision from show to show. Available for rent or for purchase, this pop-up display is versatile, lightweight and durable, and setup can be completed without tools in only a few minutes.

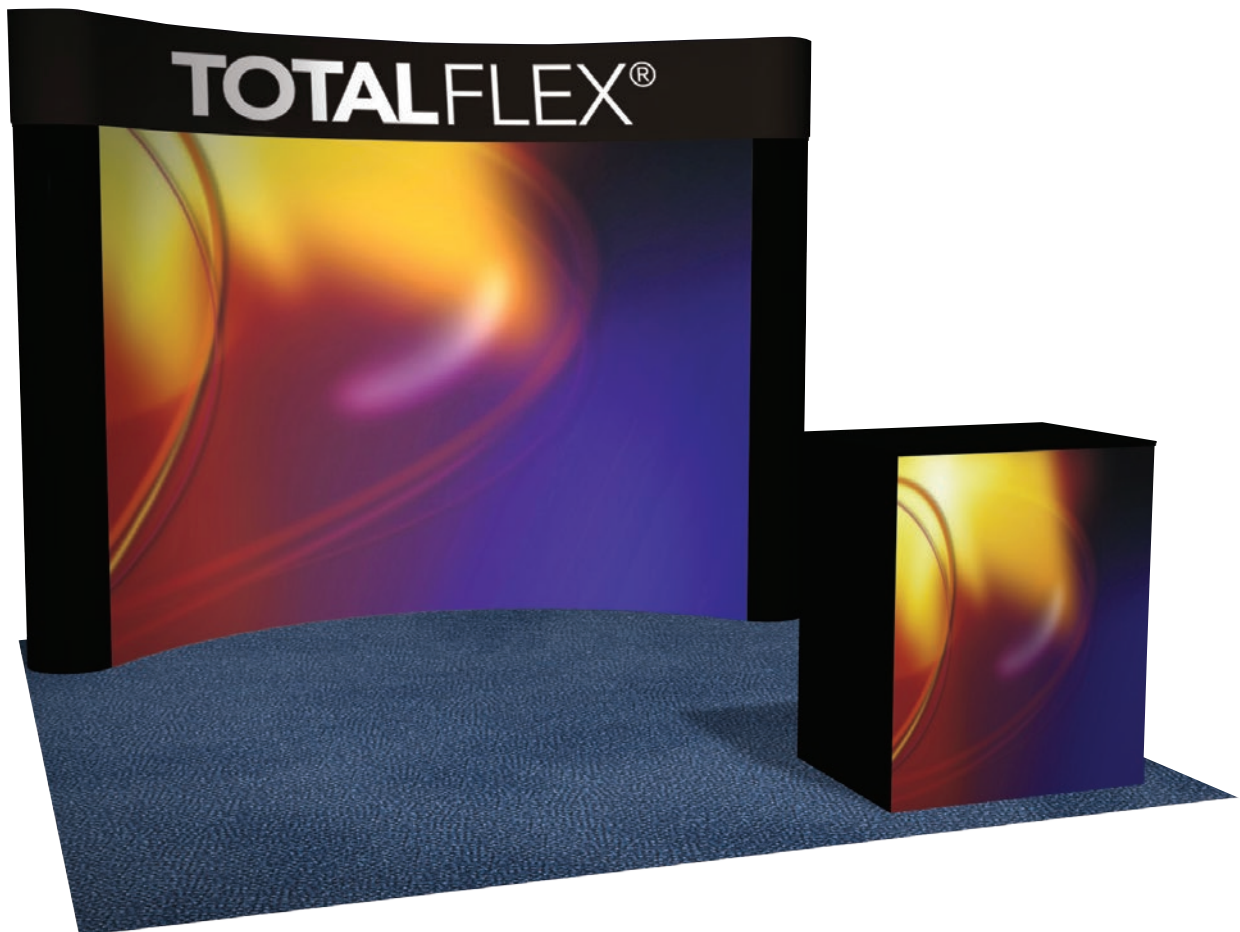


Call customer service at the number listed on the Quick Facts. For fast, easy ordering, go to www.freemanco.com

The TotalFlex® solution is the most versatile exhibit option available:

- Floor unit cases easily convert into a podium.
- Velcro-compatible fabric panels available in a wide selection of colors.
- Compatible with shelves, lights and other innovative trade show accessories.
- Available in a variety of sizes for rent or purchase, including a tabletop version (shown on front).
- Freeman offers full graphic and logo design solutions.*
- All TotalFlex® rental units include installation & dismantling of display system, material handling, 9'x10' or 9'x20' Classic Carpet with nightly vacuuming, 200-watt halogen lights (1 light for the table-top unit, 2 lights per 8x10 unit) as well as power and labor to hang them.

**Graphic design elements are priced separately and not included with TotalFlex® order.*



FLOOR UNITS

- 10'w x 8'h Floor Standing Unit
- 20'w x 8'h Floor Standing Unit

TABLE TOP UNITS

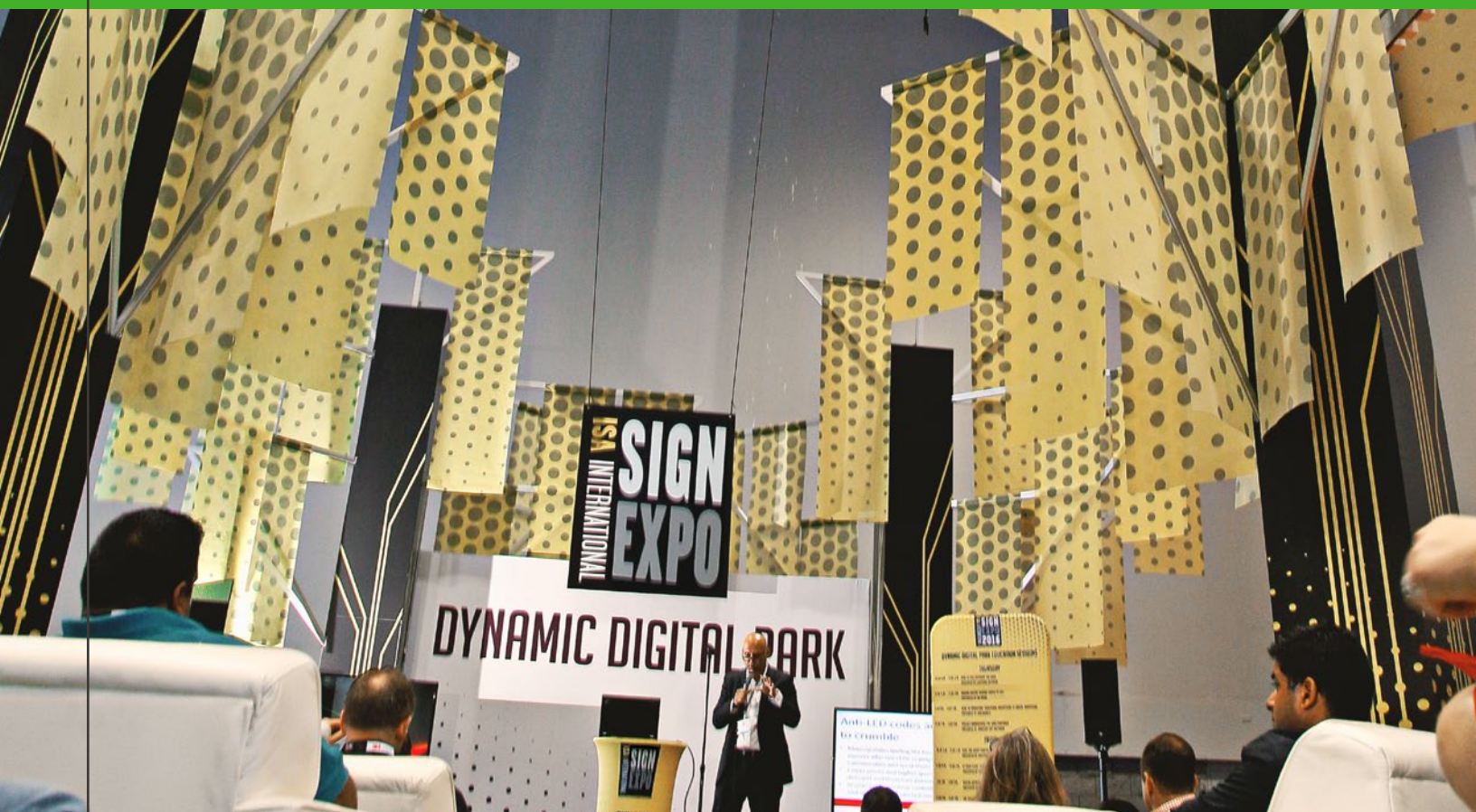
- 6'w x 40"h Table Top Unit
- 8'w x 40"h Table Top Unit

SEEING IS BELIEVING

.....

Quality graphics contribute significantly to the impact of your exhibit. With state-of-the-art design and printing capabilities, Freeman brings your banners, signage, and exhibit graphics to life in a larger-than-life way. Our graphics products redefine "high definition," which means your brand has never been seen like this before.

- Photo-quality / high-resolution printing on a variety of rigid and rolled material including honeycomb, foam, Polyfoam, PVC, acrylic, fabric, vinyl and mesh materials
- Grand Format printers provide high-resolution digital printing of single and double-sided banners in virtually any size
- Electronic file transfer, in-house printing, and company-wide procedure standardization allow us to control quality, cost and scheduling on a nationwide basis
- Freeman's extensive resources ensure that last minute repairs and replacements are handled efficiently as needed, no matter where your event may be located



Call customer service at the number listed on the Quick Facts. For fast, easy ordering, go to www.freemanco.com

CREATING VISUAL EXCITEMENT

Quality graphics contribute significantly to the impact of your exhibit. Vivid colors and sharp images attract attention, build traffic, and communicate messages more effectively. Freeman has invested in the latest printing technology and has the skills to provide you with the finest high-resolution digital graphic reproduction available.

STATE-OF-THE-ART CAPABILITIES

Freeman can provide four-color, photo-quality, high-resolution digital printing in virtually any size for banners, signage, exhibit graphics, and more. Each Freeman location has stand-alone printing capabilities, along with two additional graphic locations for additional support and for special requirements.

SUPERIOR QUALITY CONTROL

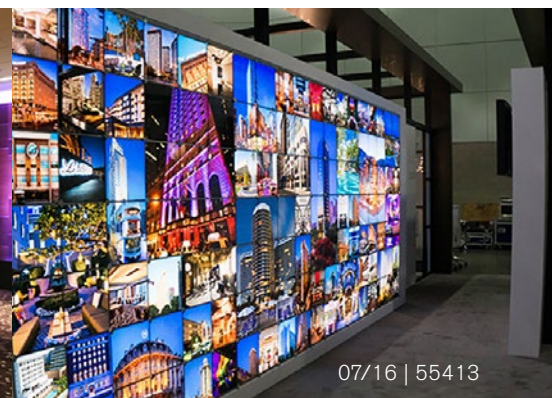
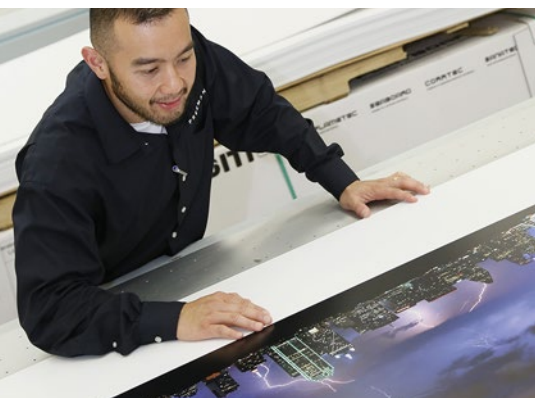
Electronic file transfer, in-house printing, and company-wide standardization of procedures allow us to control quality, cost and scheduling for our customers on a nationwide basis. Last minute repairs and replacements are handled efficiently through our nationwide resources.

DEPTH OF RESOURCES

- 5M UV roll printers provide grand format, four-color, high-resolution digital printing of single and double-sided banners up to 10' wide and virtually any size with seams.
- 3M Dye Sublimation printers provide 10' fabric graphics that work perfectly in our SmartWall panel system.
- UV flatbeds print directly to a variety of ridged materials and offer a 100% recyclable graphic when using a cardboard substrate.
- Large format Eco-Solvent printers produce high quality graphics for wall, carpet and window applications.
- 3M high speed digital cutters allow for precise cutting of multiple panel applications and also custom router graphic panels.
- Computer-aided graphic design & layout available for your assistance.

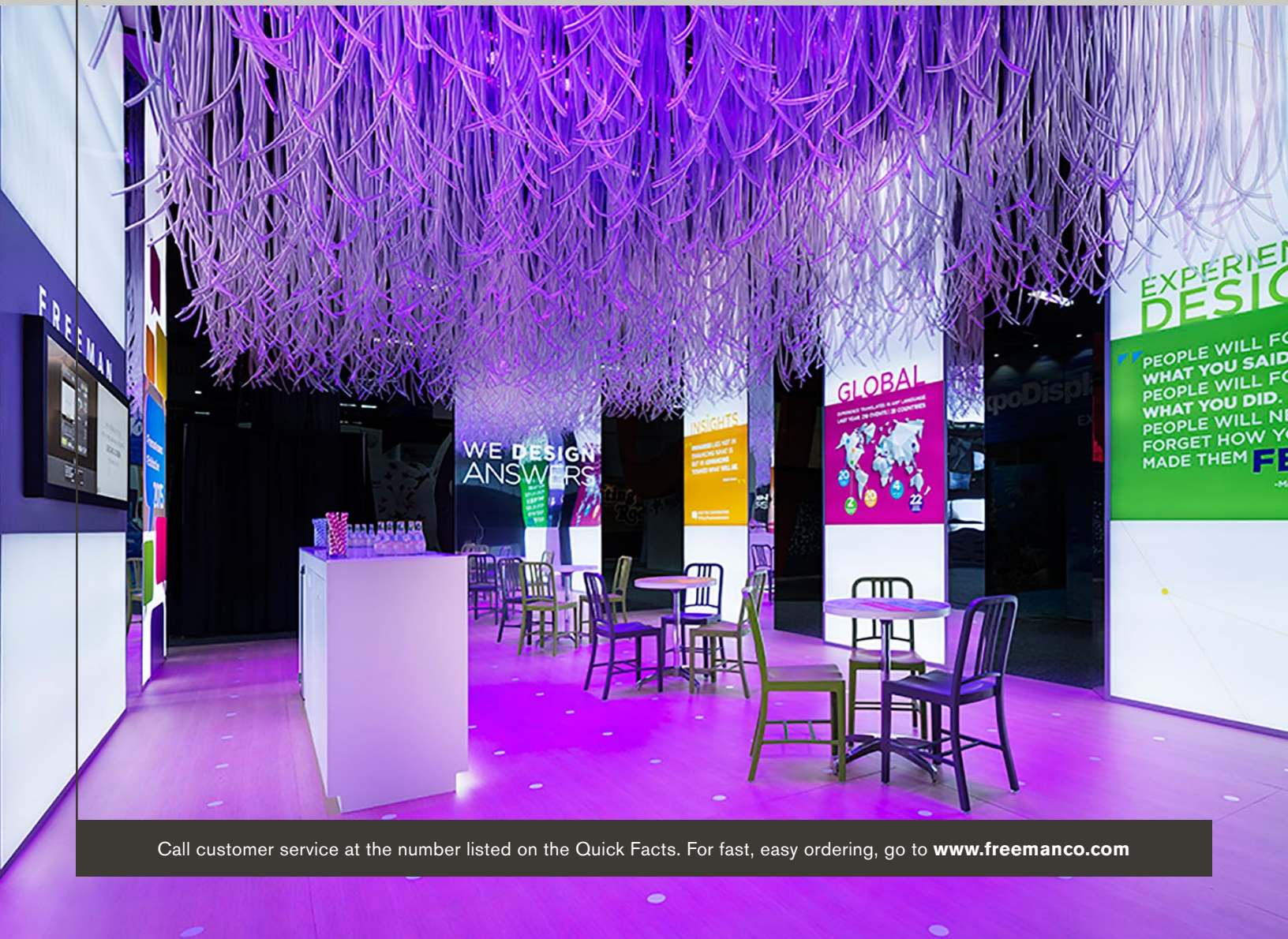
REPRODUCTION AND INSTALLATION

- Suspended banners
- Accent graphic photo panels
- Large format signage and banners
- Logo reproduction
- Backlit displays and murals
- Four-color carpet image printing



LET US DO THE HEAVY LIFTING

Freeman specialists are ready to assist you with all of your exhibit requests, from beginning to end. And when it comes to installing and dismantling exhibits, we make no exceptions. Whether it's shipping and storage, emergency on-site repairs, basic installation and dismantling or support service coordination, including electrical, furnishings and more, Freeman has the resources and capabilities to ensure the most successful show experience possible.



Call customer service at the number listed on the Quick Facts. For fast, easy ordering, go to www.freemanco.com

Freeman installation & dismantling experts work closely with you to coordinate every phase of your trade show participation, including:

- Pre-planning and budget consultation
- Skilled labor coupled with support services coordination - electrical, furnishings, floral, transportation, and audio visual
- On-site supervisors with dedicated floor managers
- Full, in-house carpentry for emergency repairs and refurbishing
- Post-show evaluations focused on incremental improvement to meet rapidly changing market conditions based upon customer feedback
- Post-show evaluations that help identify small changes that make big impacts

ON-SITE SUPERVISION

You may wish to supervise labor on your own, but if you need assistance, Freeman installation & dismantling experts will get the job done as an extension of your team.

If You Use Freeman Staff

Exhibits can be set up prior to your arrival under the direction of Freeman I&D supervisors.

